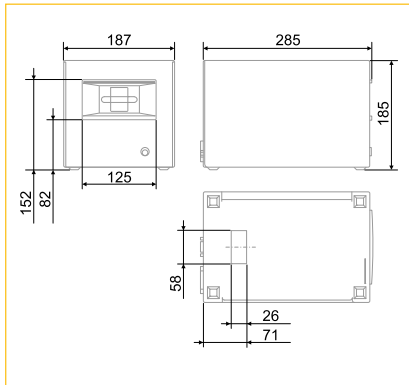


S30/B

Thermal Printer for Barcode Tickets

Dimensions (mm):



Intended Use:

The S30/B is connected to the manual sales device (POS) and serves as printer for barcode tickets. The integrated continuous ticket feeding unit allows multiple ticket productions.



TECHNICAL SPECIFICATIONS

Connections:	<ul style="list-style-type: none"> • Power Supply • RS232
Barcode Processing:	<ul style="list-style-type: none"> • Thermal ticket printer • Ticket feeder for a ticket stack with up to 5,000 tickets
Power Supply:	<ul style="list-style-type: none"> • 230 V / 50 Hz or 120 V / 60 Hz
Power Consumption (approx.):	<ul style="list-style-type: none"> • 70 VA (operation/ticket printing) • 16 VA (standby)
Place of Installation:	<ul style="list-style-type: none"> • For indoor use only
Temperature Range:	<ul style="list-style-type: none"> • +5 °C ... +45 °C
Air Humidity:	<ul style="list-style-type: none"> • 0 % ... 95 % (non-condensing)
Weight:	<ul style="list-style-type: none"> • Approx. 5,5 kg
Approvals and Conformity:	<ul style="list-style-type: none"> • CE
Hints:	<ul style="list-style-type: none"> • The connectors for the power supply (primary power receptacle) and for the dialogue (RS232) are located in the lower part of the back. Consider that there is enough space for the connectors when integrating the S30/B into a workplace!

File name: POS_DATA_S30-B_8693400..._0_en_GB.pdf //Illustrations and descriptions may also include special options.